

THE **LEADING** WAREHOUSE MANAGEMENT SYSTEM FOR **SAP BUSINESS BYDESIGN**



User-friendly & modern browser-based interface, compatible with almost any device



Turnkey deployment and flexible partner involved throughout the entire process



Scalable WMS: Grow from simple barcode scanning operations to automated warehouse robots



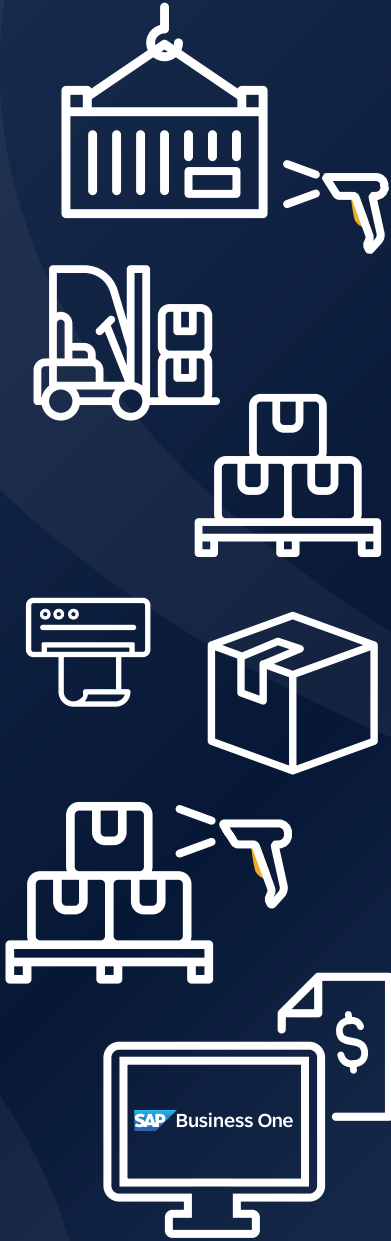
Dedicated and experienced support, development and consulting team, 100% focused on WMS

Order No.	Date	Quantity	Status
100	2020-01-01	100	Open
101	2020-01-02	200	Open
102	2020-01-03	300	Open
103	2020-01-04	400	Open
104	2020-01-05	500	Open
105	2020-01-06	600	Open
106	2020-01-07	700	Open
107	2020-01-08	800	Open
108	2020-01-09	900	Open
109	2020-01-10	1000	Open
110	2020-01-11	1100	Open
111	2020-01-12	1200	Open
112	2020-01-13	1300	Open
113	2020-01-14	1400	Open
114	2020-01-15	1500	Open
115	2020-01-16	1600	Open
116	2020-01-17	1700	Open
117	2020-01-18	1800	Open
118	2020-01-19	1900	Open
119	2020-01-20	2000	Open
120	2020-01-21	2100	Open



LANGUAGES SUPPORTED

- ENGLISH
- GERMAN
- FRENCH
- DUTCH
- SPANISH
- PORTUGUESE



INCREASE INVENTORY ACCURACY UP TO 99.5%

By leveraging real-time tracking, barcode scanning, and automated data entry, LISA WMS eliminates manual errors and ensures that your inventory records are always up-to-date. This increased accuracy allows you to make informed decisions, reduce stockouts, and optimize your inventory levels, ultimately saving time and money.

INCREASE WAREHOUSE PRODUCTIVITY BY MORE THAN 30%

LISA optimizes picking routes, minimizing travel time and reducing the risk of errors. By streamlining processes and automating tasks, your warehouse staff can work more efficiently, allowing them to handle a higher volume of orders without compromising on quality. This increased productivity translates into higher volume capacity and faster order fulfillment.

PROCESS ORDERS 9 TIMES FASTER

LISA WMS enables efficient order consolidation, automatically allocating orders to the appropriate warehouse zones and picking teams. Barcode scanning technology and the system's seamless integration with SAP Business One ensure that order information is instantly accessible, eliminating the need for manual data entry.

Order No.	Date	Quantity	Status
100	2020-01-01	100	Open
101	2020-01-02	200	Open
102	2020-01-03	300	Open
103	2020-01-04	400	Open
104	2020-01-05	500	Open
105	2020-01-06	600	Open
106	2020-01-07	700	Open
107	2020-01-08	800	Open
108	2020-01-09	900	Open
109	2020-01-10	1000	Open
110	2020-01-11	1100	Open
111	2020-01-12	1200	Open
112	2020-01-13	1300	Open
113	2020-01-14	1400	Open
114	2020-01-15	1500	Open
115	2020-01-16	1600	Open
116	2020-01-17	1700	Open
117	2020-01-18	1800	Open
118	2020-01-19	1900	Open
119	2020-01-20	2000	Open
120	2020-01-21	2100	Open

IMPROVE PICKING & SHIPPING ACCURACY UP TO 99%

Advanced picking methods ensure that the right items are selected every time. Automated verification processes, including barcode scanning and weight checks, guarantee that orders are accurately fulfilled before shipping.

DASHBOARDS & KPIs PROVIDED BY N'SIGHT

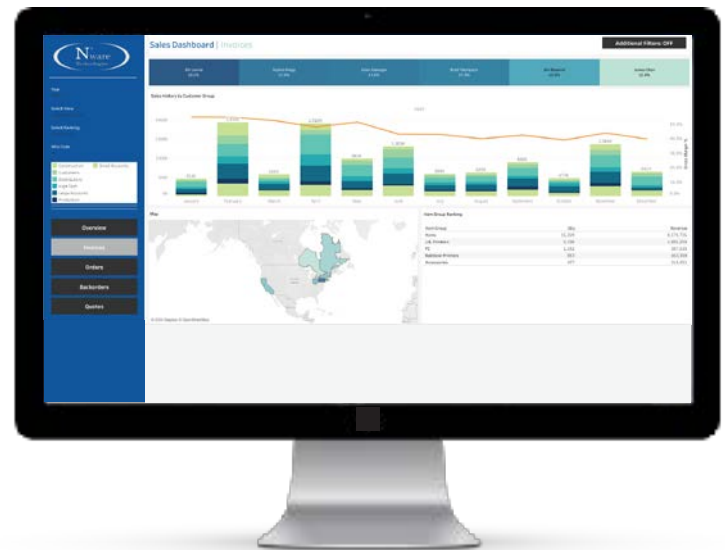
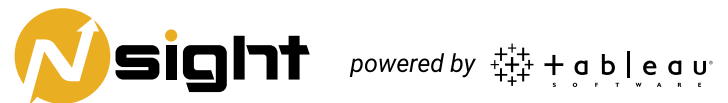
REAL-TIME KEY PERFORMANCE INDICATORS (KPIs)

Revolutionize the way you manage your supply chain with advanced warehouse management dashboards and KPIs! By leveraging business intelligence tools, small and midsize businesses can gain deep insights into their warehouse performance, identifying bottlenecks, inefficiencies, and areas for improvement.

Real-time dashboards and reports provide visibility into key metrics such as inventory levels, order fulfillment rates, and employee productivity, enabling managers to make informed decisions quickly.

OUT-OF-THE BOX DASHBOARDS & KPIs

- ✓ Inventory turnover per locations
- ✓ Warehouses performance (Pick / Pack / Ship productivity)
- ✓ Employee performance (Pick / Pack / Ship productivity)
- ✓ Transaction Volume
- ✓ On-hand inventory
- ✓ Backorders
- ✓ Order allocation & release
- ✓ Open orders/order status



CONTACT OUR EXPERTS TODAY TO KNOW MORE ABOUT OUR **LISA WMS**



Global Presence : USA — Canada — Latin America — EMEA

📞 NORTH AMERICA 1 (800) 270-9420 IRELAND +353-(0)1-903 9997 UNITED KINGDOM +44 207 660 4044

🌐 www.nwaretech.com ✉ info@nwaretech.com

Receiving PO / GRPO	✓
Put Away Items	✓
Put Away Items Pallets	✓
Directed Picking Items	✓
Directed Picking Pallets	✓
Directed Group Picking (Pick & Sort)	✓
Repacking prior to Shipping	✓
Put Back Inventory (Undo Pick)	✓
Lot Number Tracking	✓
Warehouse Analytics/Dashboards	✓
License Plates / Mobile Bins	✓
Shipping / Delivery	✓
Express Picking	✓
Express Shipping	✓
Inventory Transfer Request (Pick, Ship and Put Back)	✓
Inventory Transfer Request (Receive)	✓
Inventory Adjustment	✓
Inventory Inquiry	✓
Inventory Transfer (Items)	✓
Inventory Transfer (Pallets)	✓
Bulk Transfer	✓
Bulk Transfer (Multiple/Batch Item Transfer)	✓
Directed Cycle Count	✓
Non Directed Cycle Count	✓
Restricted Inventory	✓
Directed Dynamic Replenishment (Let Down & Fill Bin)	✓
Batch Number Tracking	✓
Multiple Sites / Warehouses	✓
Replenishment Report (manual)	✓
Pick Priorities Screens (Sales Orders, Work Orders and Transfer Requests)	✓
Sales BOM (Pick-Pack-Ship)	✓
GS1 Label Scanning / Parsing	✓
EDI Integration data support - 856 ASN	✓
Serial Number Tracking	✓
Expiry Date Tracking*	✓
Cross Docking	✓
Multiple zones / Areas	✓
Additional Companies / Database Connector	✓
Hard Allocations (Manual)	OPTION
Integration with autonomous collaborative robots (cobots) & automated storage systems (VLM)	OPTION

*Expiry Date Tracking: Fully functional in LISA WMS, but not synchronized with SAP Business ByDesign.