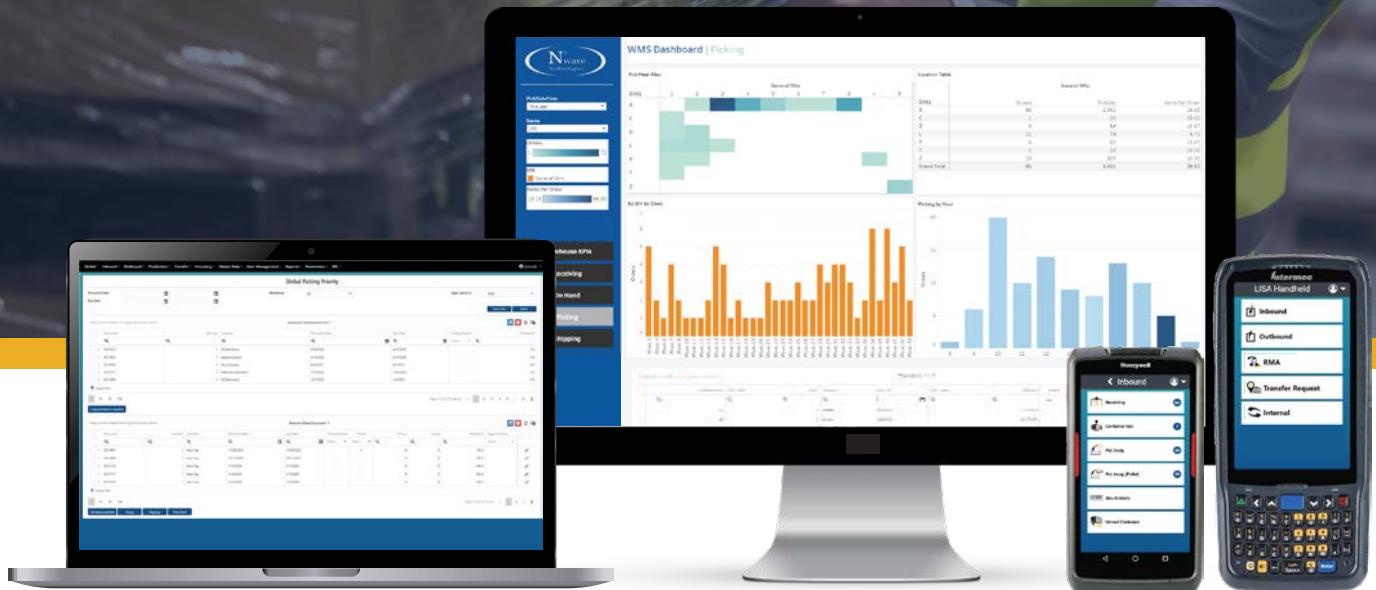


THE **LEADING** WAREHOUSE MANAGEMENT SYSTEM FOR **SAP BUSINESS ONE**



User-friendly & modern browser-based interface, compatible with almost any device



Turnkey deployment and flexible partner involved throughout the entire process



Scalable WMS: Grow from simple barcode scanning operations to automated warehouse robots



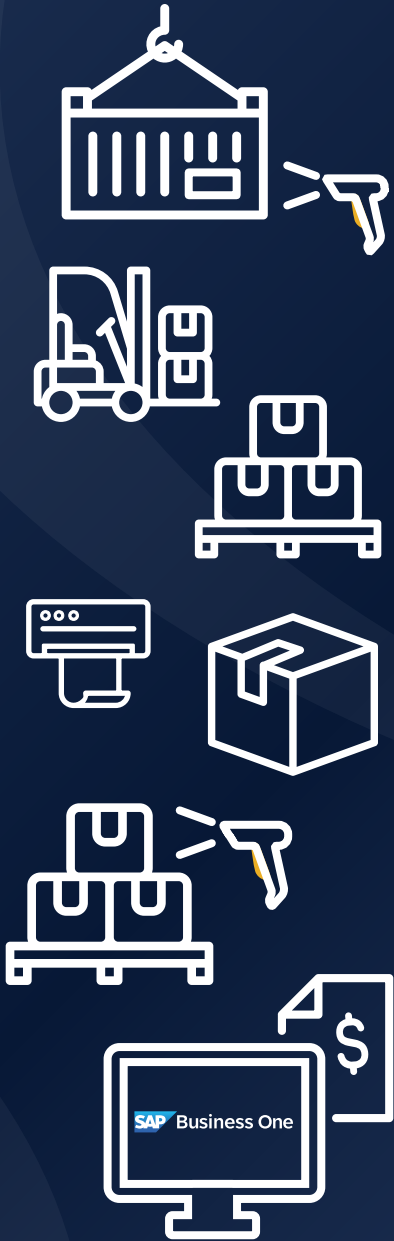
Dedicated and experienced support, development and consulting team, 100% focused on WMS

Order No.	Date	Material	Quantity	Status
100	2023-01-01	10000000	1000	Open
101	2023-01-02	10000001	2000	Open
102	2023-01-03	10000002	3000	Open
103	2023-01-04	10000003	4000	Open
104	2023-01-05	10000004	5000	Open
105	2023-01-06	10000005	6000	Open
106	2023-01-07	10000006	7000	Open
107	2023-01-08	10000007	8000	Open
108	2023-01-09	10000008	9000	Open
109	2023-01-10	10000009	10000	Open
110	2023-01-11	10000010	11000	Open



LANGUAGES SUPPORTED

- ENGLISH
- GERMAN
- FRENCH
- DUTCH
- SPANISH
- PORTUGUESE



INCREASE INVENTORY ACCURACY UP TO 99.5%

By leveraging real-time tracking, barcode scanning, and automated data entry, LISA WMS eliminates manual errors and ensures that your inventory records are always up-to-date. This increased accuracy allows you to make informed decisions, reduce stockouts, and optimize your inventory levels, ultimately saving time and money.

INCREASE WAREHOUSE PRODUCTIVITY BY MORE THAN 30%

LISA optimizes picking routes, minimizing travel time and reducing the risk of errors. By streamlining processes and automating tasks, your warehouse staff can work more efficiently, allowing them to handle a higher volume of orders without compromising on quality. This increased productivity translates into higher volume capacity and faster order fulfillment.

PROCESS ORDERS 9 TIMES FASTER

LISA WMS enables efficient order consolidation, automatically allocating orders to the appropriate warehouse zones and picking teams. Barcode scanning technology and the system's seamless integration with SAP Business One ensure that order information is instantly accessible, eliminating the need for manual data entry.

Order No.	Date	Material	Quantity	Status
200	2023-02-01	20000000	2000	Open
201	2023-02-02	20000001	4000	Open
202	2023-02-03	20000002	6000	Open
203	2023-02-04	20000003	8000	Open
204	2023-02-05	20000004	10000	Open
205	2023-02-06	20000005	12000	Open
206	2023-02-07	20000006	14000	Open
207	2023-02-08	20000007	16000	Open
208	2023-02-09	20000008	18000	Open
209	2023-02-10	20000009	20000	Open
210	2023-02-11	20000010	22000	Open

IMPROVE PICKING & SHIPPING ACCURACY UP TO 99%

Advanced picking methods ensure that the right items are selected every time. Automated verification processes, including barcode scanning and weight checks, guarantee that orders are accurately fulfilled before shipping.

DASHBOARDS & KPIs PROVIDED BY N'SIGHT

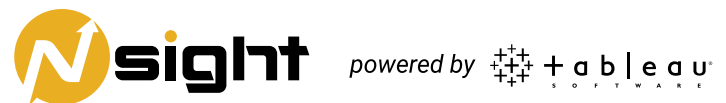
REAL-TIME KEY PERFORMANCE INDICATORS (KPIs)

Revolutionize the way you manage your supply chain with advanced warehouse management dashboards and KPIs! By leveraging business intelligence tools, small and midsize businesses can gain deep insights into their warehouse performance, identifying bottlenecks, inefficiencies, and areas for improvement.

Real-time dashboards and reports provide visibility into key metrics such as inventory levels, order fulfillment rates, and employee productivity, enabling managers to make informed decisions quickly.

OUT-OF-THE BOX DASHBOARDS & KPIs

- ✓ Inventory turnover per locations
- ✓ Warehouses performance (Pick / Pack / Ship productivity)
- ✓ Employee performance (Pick / Pack / Ship productivity)
- ✓ Transaction Volume
- ✓ On-hand inventory
- ✓ Backorders
- ✓ Order allocation & release
- ✓ Open orders/order status



CONTACT OUR EXPERTS TODAY TO KNOW MORE ABOUT OUR **LISA WMS**



Global Presence : USA — Canada — Latin America — EMEA

☎ NORTH AMERICA 1 (800) 270-9420 IRELAND +353-(0)1-903 9997 UNITED KINGDOM +44 207 660 4044

🌐 www.nwaretech.com ✉ info@nwaretech.com

Receiving PO / GRPO	✓
Put Away Items	✓
Put Away Items Pallets	✓
Directed Picking Items	✓
Directed Picking Pallets	✓
Directed Group Picking (Pick & Sort)	✓
Repacking prior to Shipping	✓
Put Back Inventory (Undo Pick)	✓
Lot Number Tracking	✓
Warehouse Analytics/Dashboards	✓
License Plates / Mobile Bins	✓
Shipping / Delivery	✓
Express Picking	✓
Express Shipping	✓
Inventory Transfer Request (Pick, Ship and Put Back)	✓
Inventory Transfer Request (Receive)	✓
Inventory Adjustment	✓
Inventory Inquiry	✓
Inventory Transfer (Items)	✓
Inventory Transfer (Pallets)	✓
Bulk Transfer	✓
Bulk Transfer (Multiple/Batch Item Transfer)	✓
Directed Cycle Count	✓
Non Directed Cycle Count	✓
Restricted Inventory	✓
Directed Dynamic Replenishment (Let Down & Fill Bin)	✓
Batch Number Tracking	✓
Multiple Sites / Warehouses	✓
Replenishment Report (manual)	✓
Pick Priorities Screens (Sales Orders, Work Orders and Transfer Requests)	✓
Sales BOM (Pick-Pack-Ship)	✓
GS1 Label Scanning / Parsing	✓
EDI Integration data support - 856 ASN	✓
Serial Number Tracking	✓
Expiry Date Tracking	✓
Multiple zones / Areas	✓
Container Receiving	OPTION
Unload Container	OPTION
RMA: Incoming / Outgoing (Receive Customer/Ship Supplier)	OPTION
Additional Companies / Database Connector	OPTION
Production: Pick - Transfer - Receive - Issue	OPTION
Cross Docking	OPTION
Hard Allocations (Manual)	OPTION
Third-Party Logistics (3PL) Integration	OPTION
Integration with autonomous collaborative robots (cobots) & automated storage systems (VLM)	OPTION